

EMERGENCIA / DOWNLIGHT
SUPERFICIE EMERGENCIA / E-
SDOWNLIGHT

Código artículo 86.E007.1521.01



Instructions for automatic test option

1. Instruction for Automatic test function

- Once the unit is powered up, a self-diagnostics test will be automatically initiated:
- Check battery, lamp, charge board and transfer fault all the time.
 - Run 3mins duration test every month.
 - Run 1H or 3H duration test every year.

Note: All test functions are preset and no need field adjustment.

| | | |
|-------|-------------------------|----------------------|
| • | One flash, 4s pause | Battery disconnected |
| •• | Two flashes, 4s pause | Low battery voltage |
| ••• | Three flashes, 4s pause | Charge board fault |
| •••• | Four flashes, 4s pause | AC/DC transfer fault |
| ••••• | Five flashes, 4s pause | LED lamp fault |

Note: When the fault is recovered, press the test button for 2s, the red flashing indicator will turn green. The fault is cleared, and the unit is back to normal.

2. Dual Colour LED Status Indicator Meaning

- Green indicator solid on: Ready/ Normal Operation
- Red indicator flashes: Require service

3. Button Test

| | |
|-------------------------------------|------------------------------|
| Press test button once | run a 30s duration test |
| Press test button twice within 2s | run a 3mins duration test |
| Press test button 3 times within 2s | run a 30mins duration test |
| Press test button 4 times within 2s | run a 1H or 3H duration test |

Status indication for Self-Testing

System status is indicated by a bi-colour LED and by a DALI status flag.

| LED indication | Status | Commentary |
|--|------------------------|--|
| Permanent green | System OK | |
| Fast flashing green (0.1 sec. on-0.1 sec. off) | Function test underway | |
| Slow flashing green (1 sec. on - 1 sec. off) | Duration test | |
| Red LED on | Load failure | Open circuit / Short circuit / LED failure |
| Slow flashing red (1 sec. on-1 sec. off) | Battery failure | Battery failed the duration test or function test/ Battery is defect / Incorrect battery voltage |
| Fast flashing red (0.1 sec. on-0.1 sec. off) | Charging failure | Incorrect charging current |
| Double pulsing green | Inhibit mode | Switching into inhibit mode via controller |
| Binary transmission of address via green/red LED | Address identification | During address identification mode |
| Green and red off | Emergency mode | Battery operation (Emergency mode) |

LED EMERGENCY
LIGHT

CE IP20



EMERGENCIA / DOWNLIGHT
SUPERFICIE EMERGENCIA / E-
SDOWNLIGHT

Código artículo 86.E007.1521.01



Precautions

Normal Operation: The green LED indicator stays on when connected to mains supply. The indicator will turn off when the mains supply fails.

Battery: LiFePO4 rechargeable battery pack. Battery should be replaced when it reaches the end of its lifetime. To avoid damage to the luminaire and ensure its performance, the battery should be replaced with same type.

Test Switch: Press the test button, LED indicator will turn off and the luminaire will be powered by the battery pack. The light source is non-replaceable. When the light source reaches the end of its lifetime, the whole luminaire shall be replaced.

Installation Procedure

WARNING

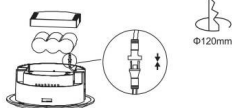
1. Switch off before installation or maintenance.
2. Switch on only after complete installation and examination of the circuit.
3. Professional electrician for installation and maintenance only.
4. This luminaire is not intended for use in high-risk task area lighting.



Read instructions and check you have all the tools and accessories to complete the installation correctly.

Recessed Mount

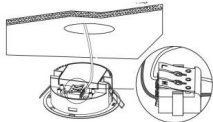
1. Take off the battery cover and connect the battery.



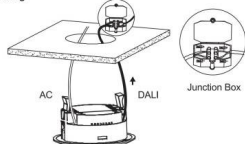
2. Take off the terminal cover.



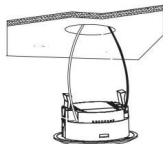
3. AC Power supply wiring, brown wire connects to L, blue wire connects N.



DALI Wiring



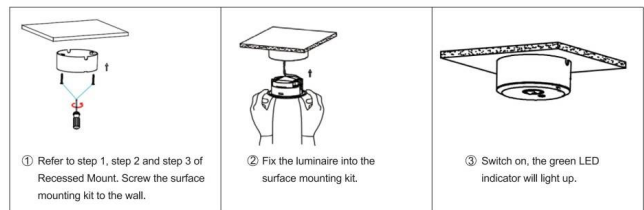
4. Fix the luminaire into ceiling.



5. Switch on, the green LED indicator will light up.



Surface Mount



Change Lens



Photometric Data

| Oval lens for pathway application | Mounting height | Spacing (C0) | | Spacing (C90) | |
|-----------------------------------|-----------------|--------------|------|---------------|-------|
| | | 3W | 6W | 3W | 6W |
| | 2.5m | 2.68m | 3.1m | 10m | 11.2m |
| | 3.0m | 2.8m | 3.4m | 10.5m | 12.3m |
| | 3.5m | 2.9m | 3.5m | 11.2m | 13.2m |
| | 2.5m | 2.68m | 3.1m | 21m | 22.6m |
| | 3.0m | 2.8m | 3.4m | 24m | 25.3m |
| | 3.5m | 2.9m | 3.5m | 28m | |